



## SPECIFICATION SHEET

### UMACABLE HIGH QUALITY DISPLAYPORT CABLE

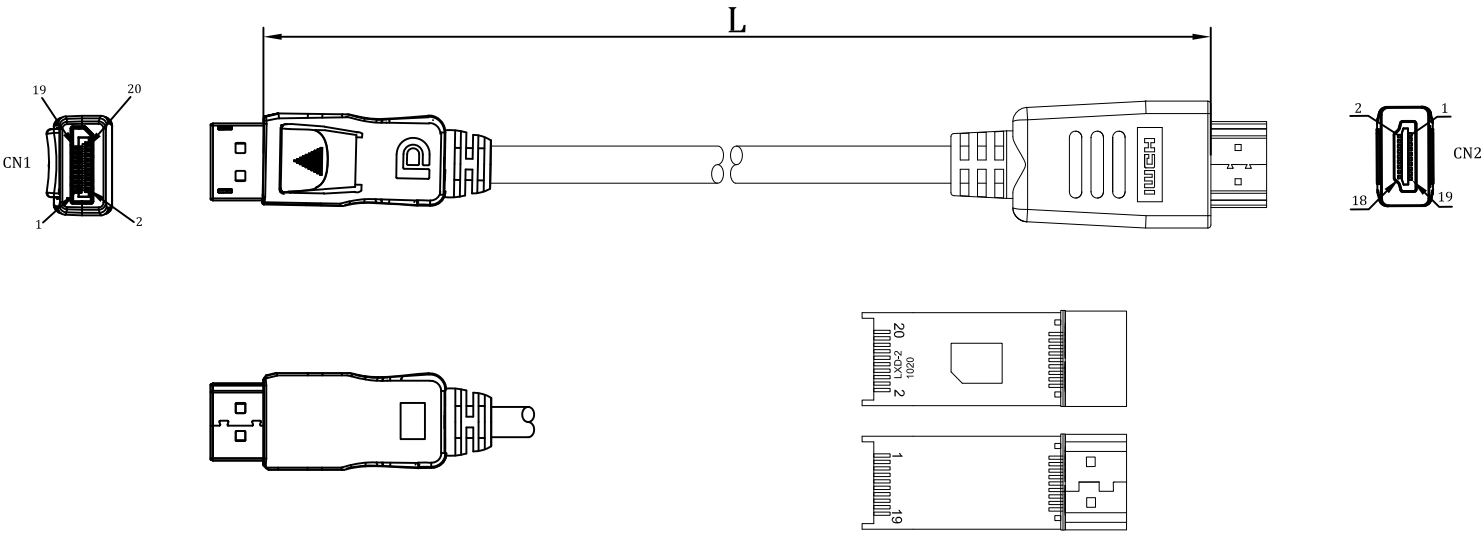
ITEM NO.: UMDP1003



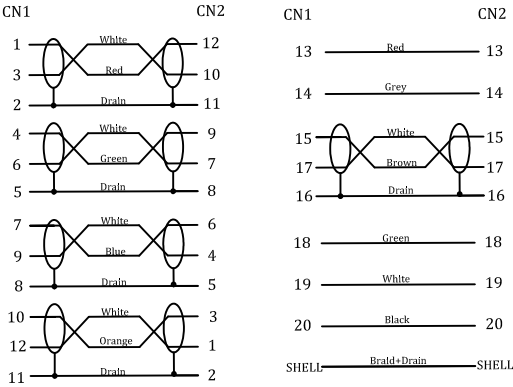
#### KEY FEATURES :

- High Quality DisplayPort cable
- DisplayPort connector with latches provides a secure connection with a release button that must be depressed before unplugging
- Carries a digital audio/video signal
- Supports a High Bit Rate (HBR) bandwidth and up to a 4k resolution
- Built to DisplayPort 1.2 standard
- Lifetime Warranty

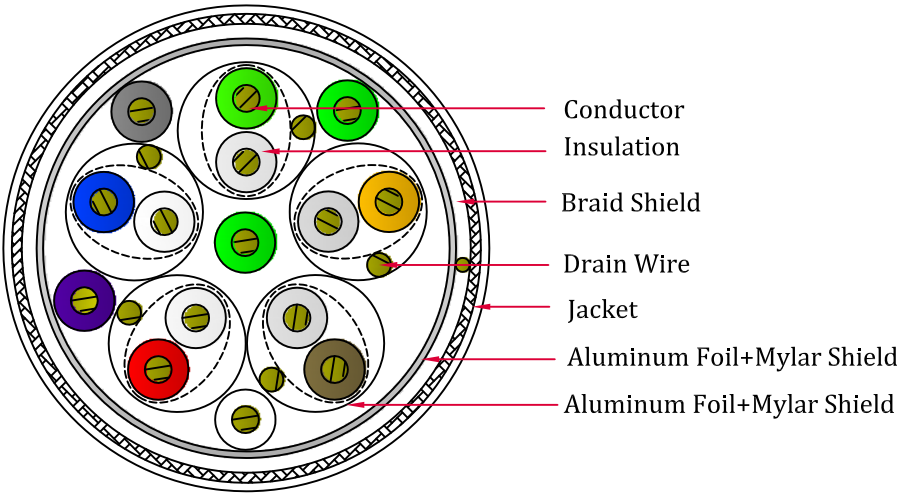
# UMACABLE HIGH QUALITY DISPLAYPORT TO HDMI ADAPTER CABLE



## Diagram



## Construction



# UMACABLE HIGH QUALITY DISPLAYPORT CABLE

## Electrical Characteristics:

|                                  |                  |
|----------------------------------|------------------|
| Nominal Impedance:               | 100±10Ω          |
| Nominal Velocity of Propagation: | ≤1.78ns          |
| DC Resistance:                   | 376Ω/km          |
| Dielectric Strength:             | AC 500V/1 minute |
| Insulation Resistance:           | 100Ω             |

## Physical Characteristics:

|                      |  |
|----------------------|--|
| Voltage Rating:      | 30V                                      |
| Maximum Bend Radius: | 90mm                                     |
| Temperature Rating:  | 80℃                                      |
| Approvals:           | RoHS Compliant                           |
| Package type:        | PE bag, Zip bag, Box, Hang card, Blister |

## Conductor 1 (5 pairs)

|                 |   |
|-----------------|---|
| Conductor Type: | 30AWG Bare Copper   |
| Insulation:     | Foamed PE   |
| Color:          | Red/White, Green/White, Blue/White, Orange/White, Brown/White |
| Drain Wire:     | 30AWG Bare Copper   |
| Shield:         | Aluminum Foil+Mylar<br>100% Coverage                          |

## Conduct 2 ( 4 cores)

|                 |                                      |
|-----------------|--------------------------------------|
| Conductor Type: | 30AWG Bare Copper                    |
| Insulation:     | HDPE                                 |
| Color:          | Red, Grey, Green, White              |
| Drain Wire:     | 30AWG Bare Copper                    |
| Shield:         | Aluminum Foil+Mylar<br>100% Coverage |

## Connector 1

|                   |                  |
|-------------------|------------------|
| Connector Type:   | DisplayPort Male |
| PIN Construction: | Phosphor Copper  |
| Plating:          | 1 μm Gold        |
| Injection:        | ABS              |

## Connector 2

|                   |                  |
|-------------------|------------------|
| Connector Type:   | DisplayPort Male |
| PIN Construction: | Phosphor Copper  |
| Plating:          | 1 μm Gold        |
| Injection:        | ABS              |

## Overall

|                 |                                      |
|-----------------|--------------------------------------|
| Drain Wire:     | 30AWG Copper Clad Steel              |
| Foil Shield:    | Aluminum Foil+Mylar<br>100% Coverage |
| Braided Shield: | 16/5/0.12 Aluminum Magnesium         |
| Jacket:         | PVC                                  |
| OD:             | 6.0±0.2mm                            |

## Customized Parameters

|               |  |
|---------------|--|
| Guage:        | AWG 30, 28, 26                           |
| Length:       | 1, 1.5, 1.8, 2, 3, 5, 7.5, 10m           |
| Color:        | Black or Customized                      |
| Ferrite Core: | Customized                               |
| Nylon Mesh:   | Customized                               |
| Package type: | PE bag, Zip bag, Box, Hang card, Blister |